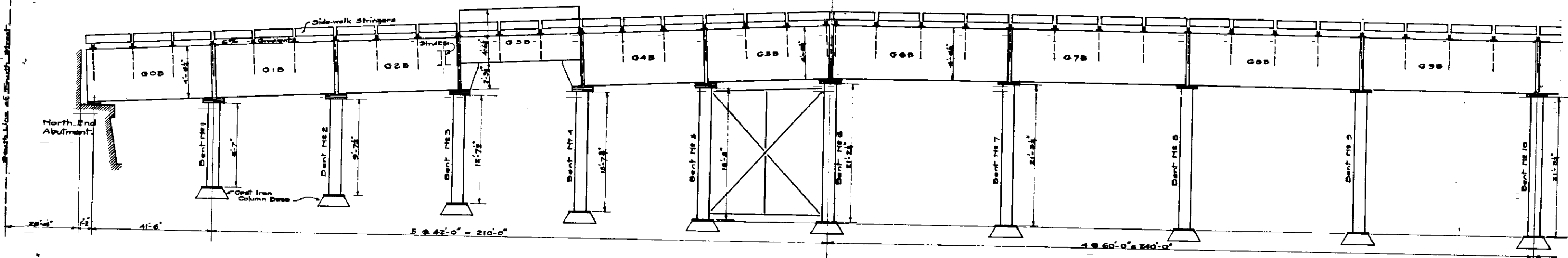
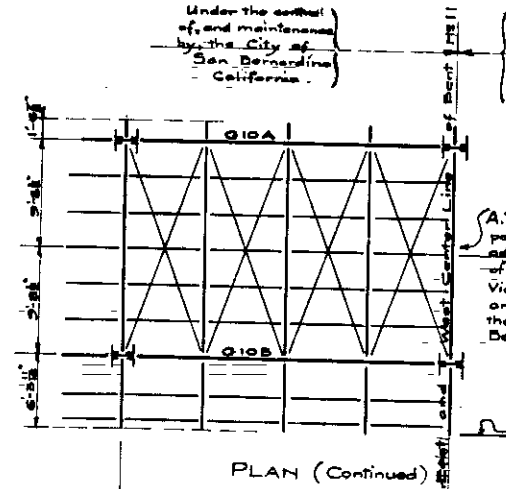


PLAN OF STEEL FRAMING OF VIADUCT
Showing Roadway Planking and Surfacing, and Sidewalk Planking Removed.
No Scale.



SIDE ELEVATION
No Scale.



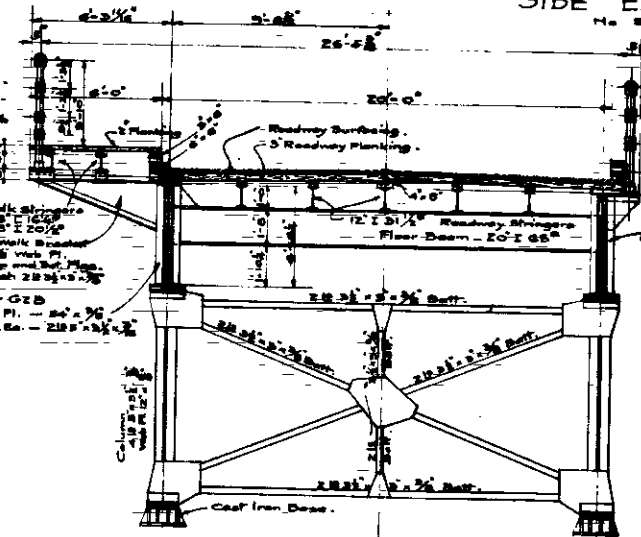
PLAN (Continued)

Under the control of, and maintained by, the City of San Bernardino, California.

Under the A.T. & S.F.R.Y. Company's control and maintenance.

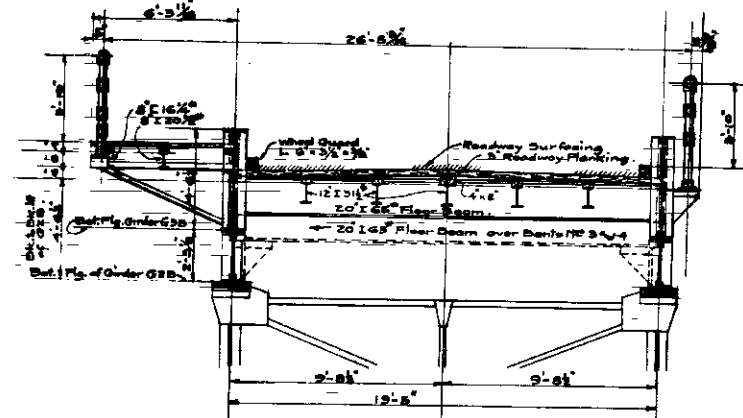
A.T. & S.F.R.Y. Company's portion of viaduct ending this end of the portion of viaduct controlled and maintained by the City of San Bernardino.

West Line of Mt. Vernon Ave. projected.



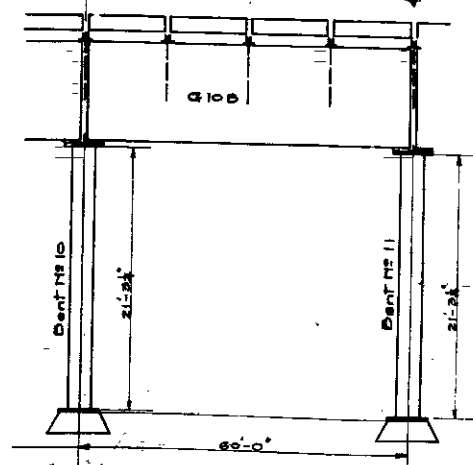
TYPICAL SECTION AT BENT NO. 2
Scale: 1/4" = 1'

The Roadway and Sidewalk Construction of all Spans of Viaduct (except Span G3B and G3A) is the same as shown in this section.

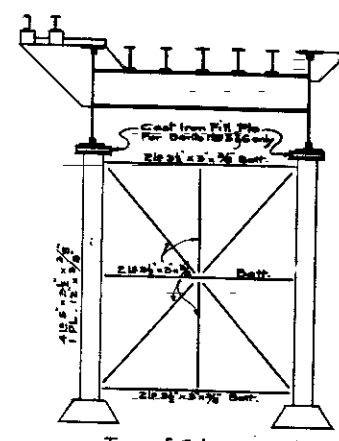


SECTION ON SPAN G3B & G3A
Scale: 1/4" = 1'

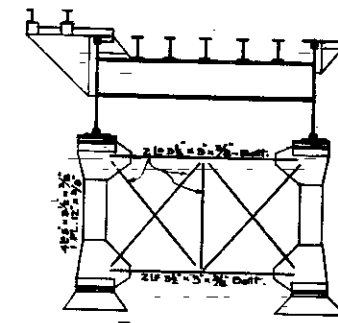
Type of Column and Sway Bracing in Bents No. 3 and 4 same as in Bent No. 2.



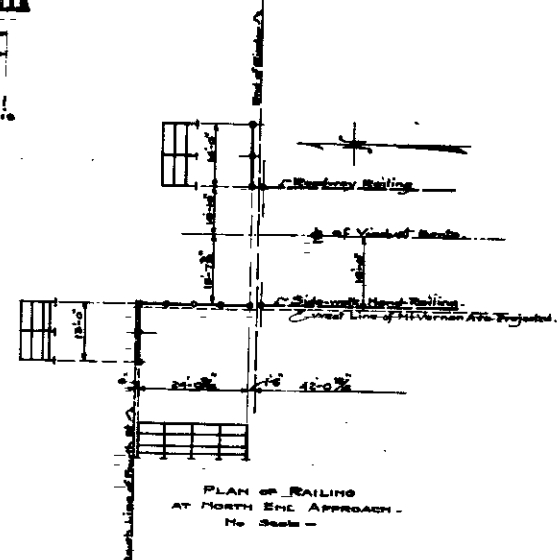
SIDE ELEVATION
No Scale.



Type of Column and Sway Bracing in Bents No. 5, 6, 7, 8, 9, 10 and 11.
No Scale.



Type of Column and Sway Bracing in Bent No. 1.
No Scale.



PLAN OF RAILING AT NORTH END APPROACH
No Scale.

PLAN No. 837-A

FOR CLEANING AND PAINTING

THE PORTION OF MT. VERNON AVENUE HIGHWAY BRIDGE

CONTROLLED AND MAINTAINED

BY THE CITY OF SAN BERNARDINO

OVER THE A.T. & S.F.R.Y. TRACKS

BETWEEN 3RD AND 4TH STREETS

IN THE

CITY OF SAN BERNARDINO, CALIFORNIA

November, 1925.

C. E. Johnson
City Engineer.